



C.C.JENSEN A/S Window Technology

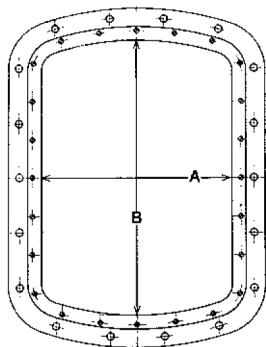
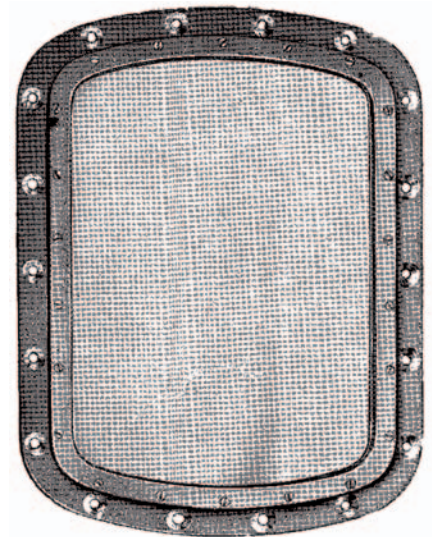
Marine Solutions

FAST VINDUE FIXED WINDOW RECHTECKIGES FESTFENSTER

Fast vindue med buet eller ret over- og underkant.
I søvandbestandigt aluminium eller messing.

Fixed window with curved or straight upper and lower edge.
Made of seawater resistant aluminium or brass.

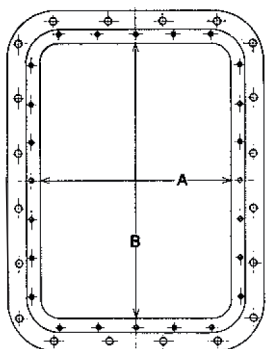
Rechteckiges Festfenster mit gebogener oder gerader
Ober- und Unterkante.
Aus seewasserfestem Aluminium oder Messing.



TYPE 2-201-1

Lysningsmål/mm		Daylight opening/mm		Glasdurchsicht/mm
A x B	A x B	A x B	A x B	A x B
200 x 300	400 x 600	500 x 600	600 x 500	800 x 600
300 x 400	425 x 575	500 x 650	600 x 800	950 x 650
350 x 500	450 x 500	500 x 700	650 x 700	
400 x 500	450 x 600	500 x 750		
400 x 550	500 x 500	500 x 800		
		500 x 900		
		550 x 600		
		550 x 750		

Lysningsmål + 120 mm = Total flangemål
Daylight opening + 120 mm = Total flange dimension
Glasdurchsicht + 120 mm = Totales Flanschmass



TYPE 2-101-1

Lysningsmål/mm		Daylight opening/mm		Glasdurchsicht/mm
A x B	A x B	A x B	A x B	A x B
300 x 400	450 x 600	600 x 600	700 x 700	A x B
350 x 500	500 x 600	600 x 700		
400 x 500	500 x 800	600 x 800		
400 x 600	550 x 650	600 x 900		
		550 x 700		

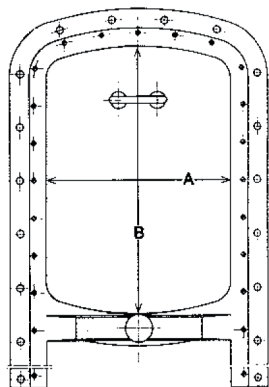
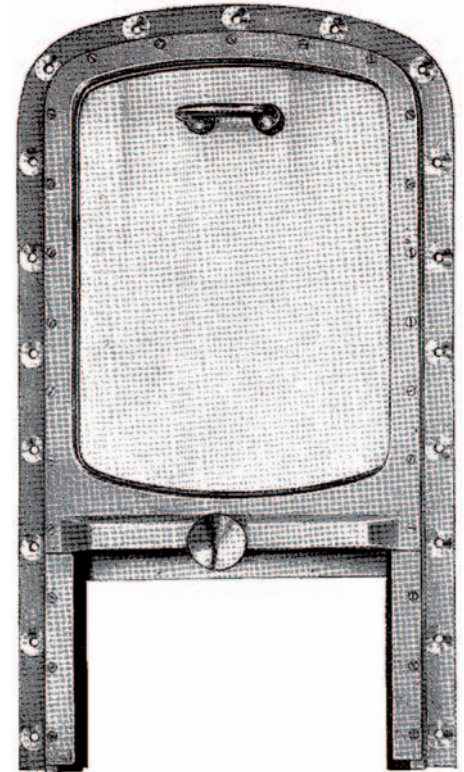


SKYDEVINDUE SASH-WINDOW RECHTECKIGES SCHIEBEFENSTER

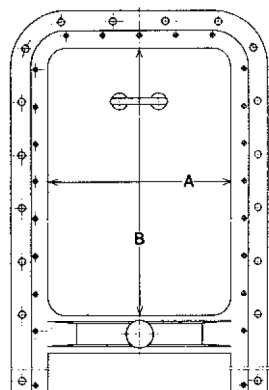
Skydevindue beregnet for saks med buet eller ret over- og underkant.
I søvandsbestandigt aluminium eller messing.

Sash-window with curved or straight upper or lower edge.
The sash-window is designed for a spring balance
The sash-windows are made of seawater resistant aluminium or brass.

Rechteckiges Schiebefenster mit gebogener oder gerader Ober- und Unterkante.
Das Schiebefenster ist für Schere vorgesehen.
Aus seewasserfestem Aluminium oder Messing



TYPE 2-201-10



TYPE 2-101-10

Lysningsmål/mm	Daylight opening/mm	Glasdurchsicht/mm	
A x B	A x B	A x B	A x B
200 x 300	475 x 600		
300 x 400	500 x 600		
350 x 500	500 x 650		
400 x 500	500 x 700		
400 x 550	540 x 680		
400 x 600	550 x 600		
425 x 575	550 x 750		
450 x 500	600 x 800		
450 x 600	650 x 750		

Lysningsmål + 140 mm = Total flangemål
Daylight opening + 140 mm = Total flange dimension
Glasdurchsicht + 140 mm = Totales Flanschmass

A x B	A x B	A x B	A x B
300 x 400	550 x 700		
350 x 500	600 x 500		
400 x 500	600 x 600		
400 x 600	600 x 700		
450 x 600	600 x 800		
500 x 600	650 x 700		
500 x 700	800 x 700		
450 x 600	650 x 750		

Alle vinduer med lysningsmål over 400 x 600 mm. leveres med 2 sidetilspændinger.
All windows with daylight opening over 400 x 600 mm. are supplied with 2 fastening handles.
Alle Fenster mit Glasdurchsicht über 400 x 600 mm. werden mit 2 Seitenvorschüben geliefert.



SIDEHÆNGSLET VINDUE SIDEHINGED WINDOW RECHTECKIGES FENSTER

Sidehængslet ind- eller udadgående vindue med buet eller ret over- og underkant.

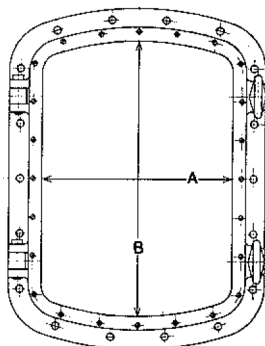
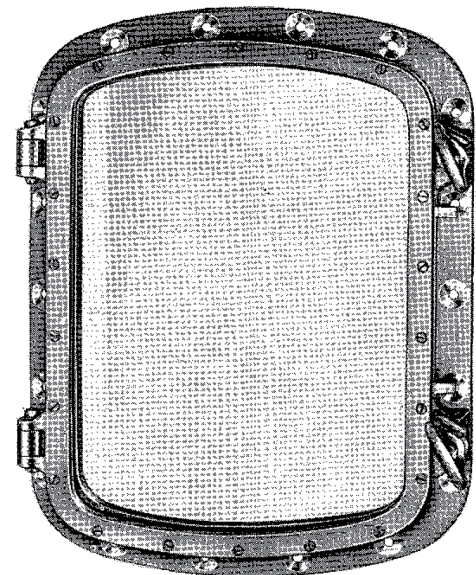
I søvandsbestandigt aluminium eller messing.

Side hinged inward or outward opening window with curved or straight upper and lower edge.

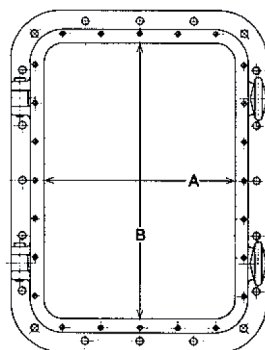
Made of seawater resistant aluminium or brass.

Rechteckiges Fenster nach innen oder nach aussen schlagend mit gebogener oder gerader Ober- und Unterkante.

Aus seewasserfestem Aluminium oder Messing.



TYPE 2-201-2



TYPE 2-101-2

Lysningsmål/mm	Daylight opening/mm	Glasdurchsicht/mm	
A x B	A x B	A x B	A x B
300 x 400	425 x 575	550 x 750	
300 x 500	450 x 600		
350 x 500	450 x 750		
400 x 500	500 x 600		
400 x 550			
400 x 600			

Lysningsmål + 140 mm = Total flangemål
Daylight opening + 140 mm = Total flange dimension
Glasdurchsicht + 140 mm = Totales Flanschmass

A x B	A x B	A x B	A x B
300 x 400	500 x 600	800 x 1000	
350 x 500	600 x 700		
400 x 500			
400 x 600			
450 x 600			
450 x 650			

NB! Udadgående · Outward opening · Nach aussen schlagend: Type 2-201-3 / 2-101-3



C.C.JENSEN A/S Window Technology

Marine Solutions

PÅBOLTNINGSKOØJER

CJC påboltningsskøjter – let type – leveres i søvandsbestandigt aluminium eller messing med nedenstående lysningsmål:

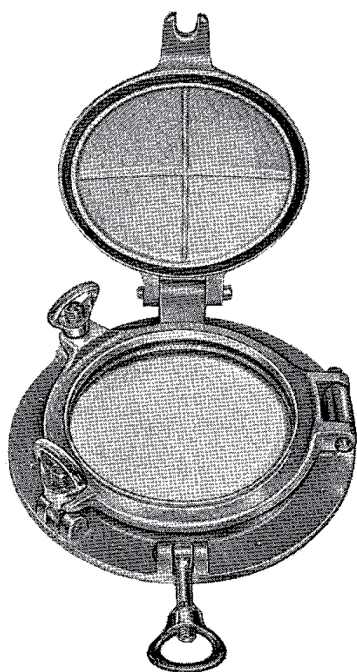
BOLTED TYPE SCUTTLES

CJC bolted type scuttles – light types – are supplied in seawater resistant aluminium or brass with daylight openings mentioned below:

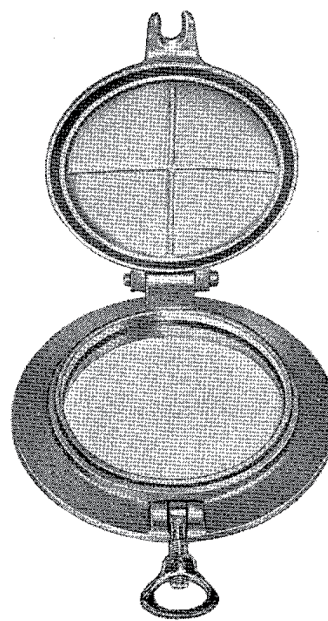
BULLAUGEN ZUM ANSCHRAUBEN

CJC Bullaugen zum Anschrauben – leichte Typen – werden aus seewasserfestem Aluminium oder Messing mit untenstehenden Glasdurchsichten geliefert:

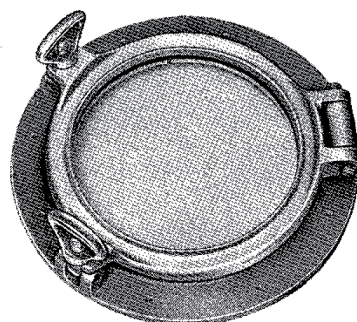
6"	8"	10"	12"	14"	16"
150	200	250	300	350	400 mm



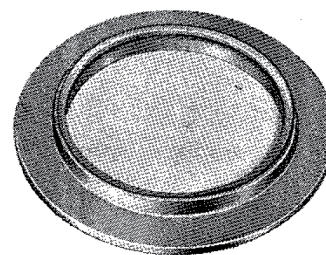
TYPE 2P 5006 MK



TYPE 2P 5007 MK



TYPE 2P 5006 UK



TYPE 2P 5007 UK

Påboltningsskøjter leveres også udført i henhold til ISO-normer.
Bolted type scuttles can also be supplied according to ISO-standards.
Die Bullaugen zum Anschrauben können auch nach den ISO-Vorschriften geliefert werden